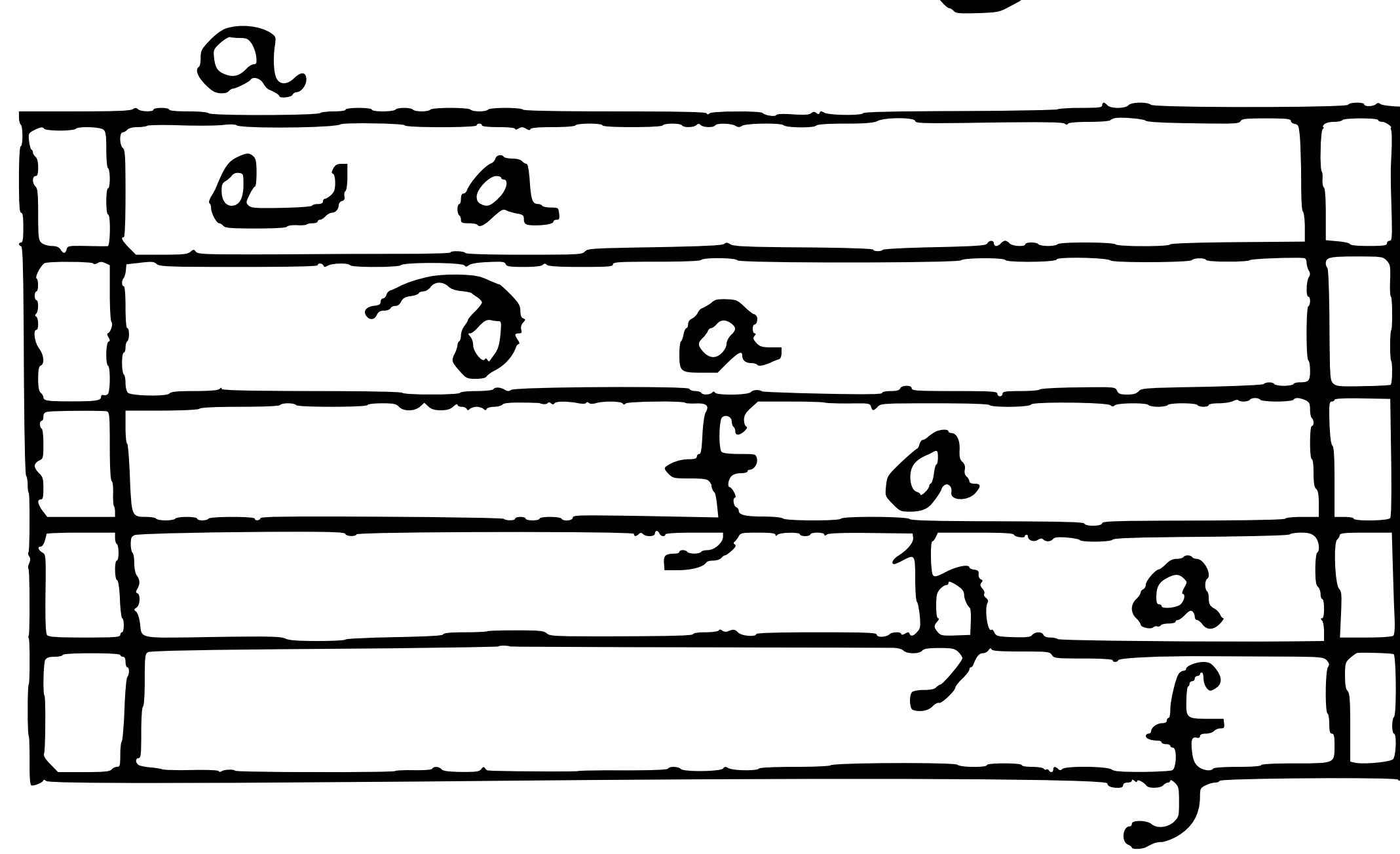


Ayres
for Solo Lyra Uyoll
M^r. John Est. .

From the Manchester Gamba Book (ca. 1660).

The original manuscript is held at the Manchester Public Library, in the Watson Collection.

tuning



Flarpe:
sette flat

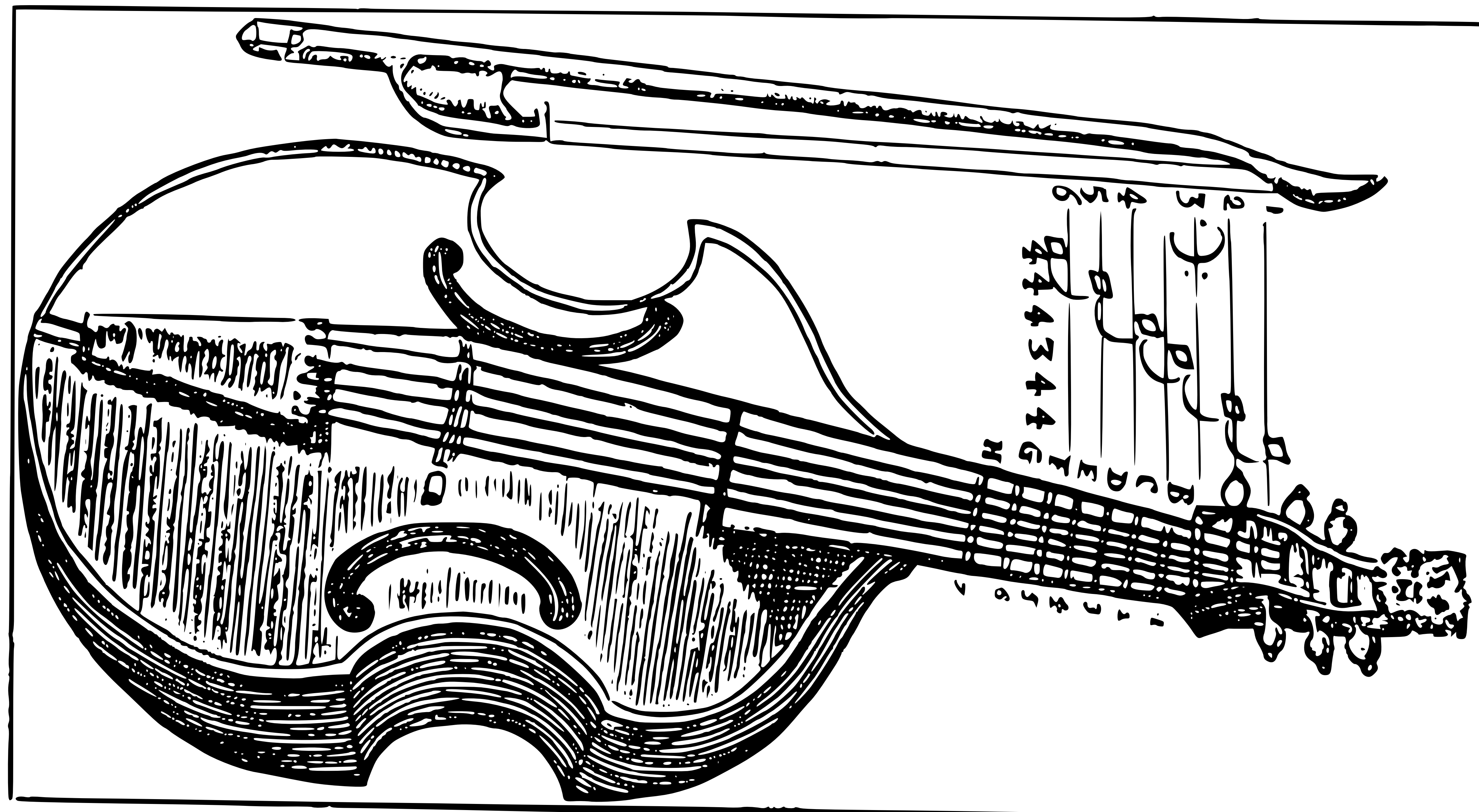
♩
17.

Handwritten musical score for a piece titled "Almaine" by M. Fohn. The score is written on a grand staff with treble and bass clefs. It features a complex rhythmic pattern with many beamed notes and rests. The notation includes various dynamics such as "f" (forte) and "a" (accents). The piece concludes with a double bar line and the signature "M. Fohn" and "Almaine. C. F. G."

Musick's Recreation ON The VIOL, Lyra-way:

Being a choice Collection of *LESSONS Lyra-way*. To which is added a *PREFACE*,
Containing some Brief *Rules and Instructions* for young Practitioners.

The Second Edition, Enlarged with Additional New LESSONS.



London, Printed by *A.G.* and *J.P.* for *J. Playford*, and are to be Sold at his Shop near the *Temple Church*. 1682.

The following ayres for solo lyra-viol are excerpted from the book entitled "Musick's Recreation on the Viol - Lyra-Way" edited by John Playford in 1682.

Lessons for the LYRA VIOL.

24



↓ ↓ ↓ ↓ ↓ ↓ ↓ ↓ ↓ ↓ ↓ ↓ ↓ ↓ ↓ ↓ ↓ ↓

Musical staff with notes and bowings. Notes include 'a', 'e', 'f', 'b'. Bowings are indicated by slanted lines with flags.

Imain, by Mr. Esto.

↓ ↓ ↓ ↓ ↓ ↓ ↓ ↓ ↓ ↓ ↓ ↓ ↓ ↓ ↓ ↓ ↓ ↓

Musical staff with notes and bowings. Notes include 'b', 'a', 'e', 'f', 'a', 'b'. Bowings are indicated by slanted lines with flags.

↓ ↓ ↓ ↓ ↓ ↓ ↓ ↓ ↓ ↓ ↓ ↓ ↓ ↓ ↓ ↓ ↓ ↓

Musical staff with notes and bowings. Notes include 'e', 'a', 'b', 'f'. Bowings are indicated by slanted lines with flags.

↓ ↓ ↓ ↓

Musical staff with notes and bowings. Notes include 'e', 'a', 'f'. Bowings are indicated by slanted lines with flags.

TABLE & CORRESPONDANCES

*Manchester Gamba Book**

- XI-10. Almaine [tuning: edfhf]
- XI-11. Coranto [tuning: edfhf]
- XI-17. Almaine [tuning: edfhf]
- XI-18. Saraband [tuning: edfhf]
- XI-20. Almaine [tuning: edfhf]
- XIV-1. Almayne [tuning: fedfh]
- XIV-2. Coranto [tuning: fedfh]
- XIV-8. Saraband [tuning: fedfh]
- XIV-15. Saraband [tuning: fedfh]
- XIX-1. [Almaine] [tuning: dfedf]

*Musick's Recreation on the Viol Lyra-Way***

- 28. Corant, by Mr. Esto.
- 24. Almain, by Mr. Esto.

*Musick's Recreation on the Viol Lyra-Way***

- 24. Almain, by Mr. Esto.
- 25. Corant, by Mr. Esto.
- 26. Almain, by Mr. Esto.
- 27. Saraband, by Mr. Esto.
- 28. Corant, by Mr. Esto.
- 29. Saraband, by Mr. Esto.
- 24. [30] Almain, by Mr. Esto.
- 33. Ayre, by Mr. Esto.
- 34. Corant, by Mr. Esto.
- 36. Saraband, by Mr. Esto.

*Manchester Gamba Book**

- XI-17. Almaine [tuning: edfhf]

- XI-11. Coranto [tuning: edfhf]

* [Mp-MS, BrM 832 Vu 51]

** [John Playford, London, 1682]